

EasyMark/EasyJewel

Versatile Desktop Laser Marker

The EasyMark series is one of the most compact laser marking systems on the market. By offering a choice of different performance classes and designs, the EasyMark solves a wide range of applications on diverse materials. It is controlled via the Coherent marking software Visual Laser Marker (VLM) in conjunction with an easy-to-use interface.

FEATURES & BENEFITS

- Easy operation thanks to user-friendly graphical user interface
- Spacious working chamber
- Low maintenance and service costs

EasyJewel PACKAGE

- Ring Marking module RMM
- SmartView™ camera positioning
- On-The-Fly engraving

OPTIONS

- XL-Version
- Camera viewing systems
- Rotation axis
- Exhaust unit including remote start
- 3D engraving

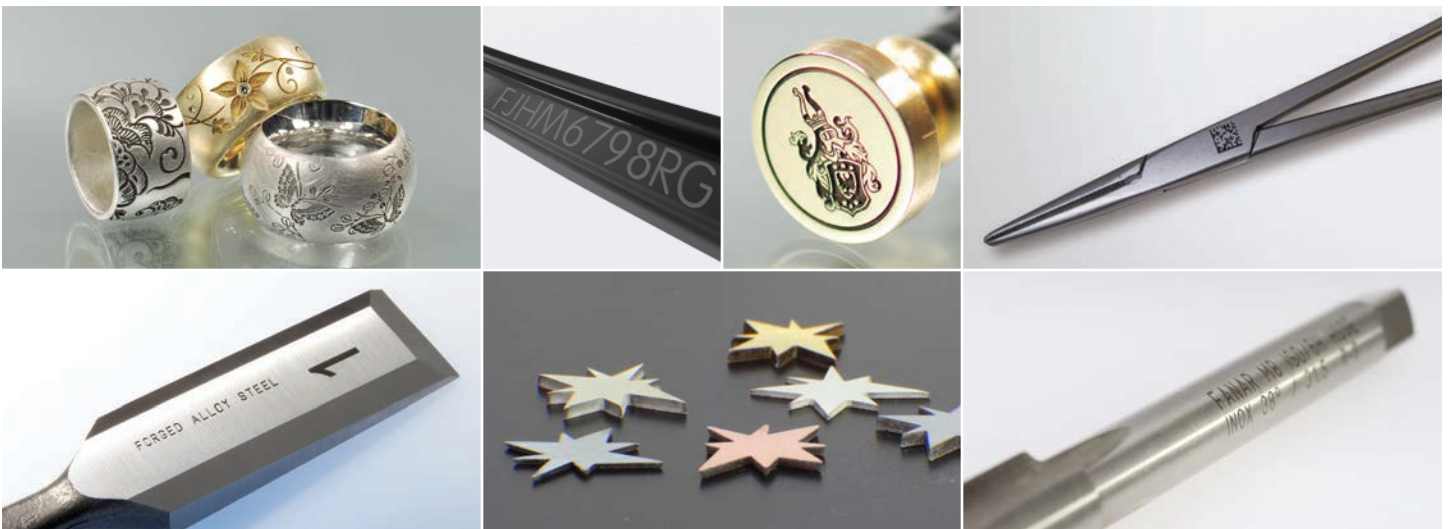
APPLICATIONS

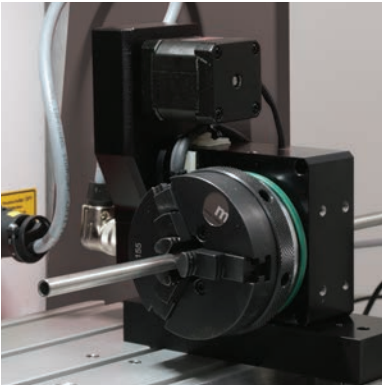
- Marking
- Annealing
- Engraving
- Deep Engraving
- Cutting



OPTICAL SPECIFICATIONS	EasyMark F 20 Varia	EasyMark F 20	EasyMark F 50
Type	Fiber	Fiber	Fiber
Wavelength (nm)	1064	1070 ±5	1070 ±5
Pulse Frequency (kHz)	1.6 to 1000	20 to 100	50 to 200
Pulse Width (ns)	4 to 200	100	120
Nominal Power (W)	>18	>18	>48
Pilot Laser (nm)	660		
Z-AXIS			
Travel	120 mm (4.72 in.)		
WORKING CHAMBER			
Part Size	300 x 200 x 120 mm (11.8 x 7.9 x 4.7 in.)		
Maximum Marking Area			
160 mm Objective	120 x 120 mm (4.7 x 4.7 in.)		
255 mm (XL-Version only)	180 x 180 mm (7.1 x 7.1 in.)		
350 mm (XL-Version only)	240 x 240 mm (9.45 x 9.45 in.)		
UTILITY			
Electrical (VAC)	100/240 ±10%		
Frequency (Hz)	50/60		
Operating Power (W)	400 (max.)	400 (max.)	600 (max.)
ENVIRONMENTAL			
Operational Temperature	+15 to +35°C (+59 to +95°F)		
DIMENSIONS			
Housing (L x W x H)			
EasyMark Standard	770 x 540 x 750 mm (30.3 x 21.3 x 29.5 in.)		
EasyMark XL-Version	770 x 540 x 940 mm (30.3 x 21.3 x 37.0 in.)		
Weight	87 kg (192 lbs.)		

APPLICATIONS



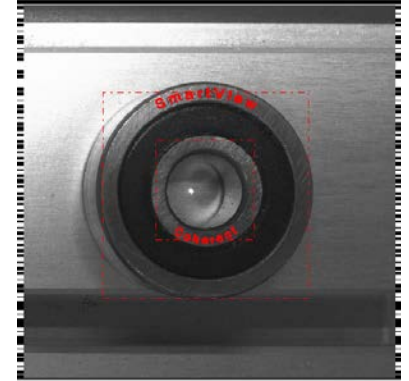


Rotary Axis

- All-around marking made easy
- Synchronized rotation to mark cylindrical workpieces
- Easy set-up, plug-and-play

SmartView™

- Camera assisted workpiece alignment
- Hit the workpiece precisely every time
- Perfect and easy alignment



3D Engraving Package

- AppSuite software package
- Step-by-step to a distortion free high resolution 3D relief



JEWELRY CONFIGURATION

RMM: Ring Marking Module

- Unique, smart ring fixture for quick and easy inside or outside clamping

OTF: On-The-Fly Marking

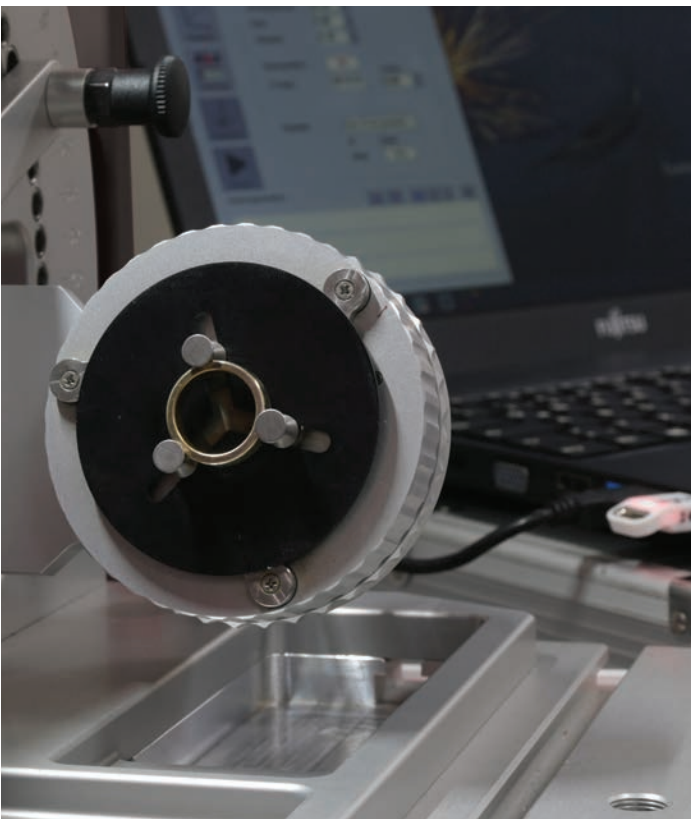
- Perfect deep-engraving all around on rings

Camera with SmartView™

- Positioning is supported by integrated camera

EasyGUI

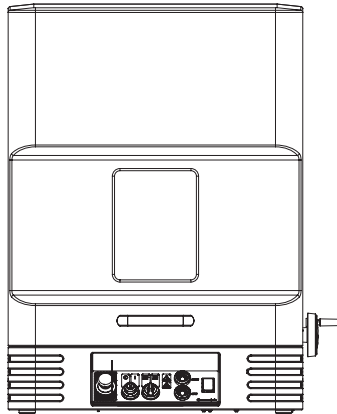
- Set-up of engraving jobs is supported by a software interface to make it easy to use



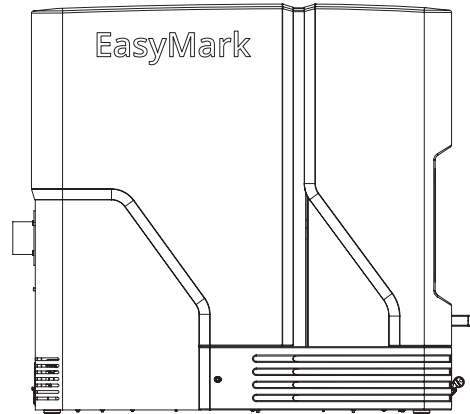
MECHANICAL SPECIFICATIONS

EasyMark/ EasyJewel

Front View

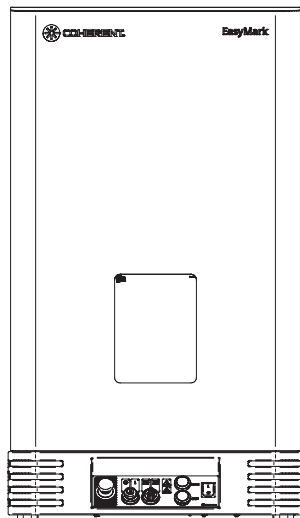


Side View

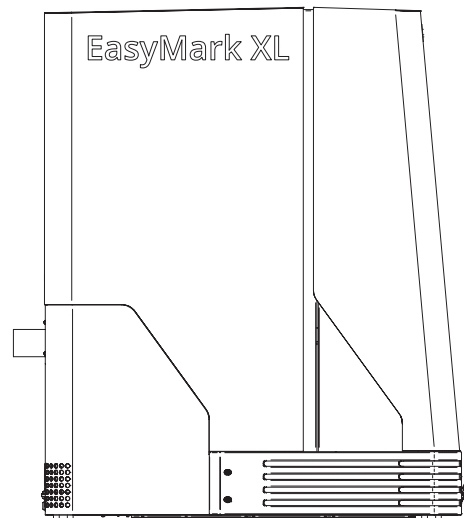


EasyMark/ EasyJewel XL

Front View



Side View



Coherent, Inc.,
5100 Patrick Henry Drive Santa Clara, CA 95054
p. (800) 527-3786 | (408) 764-4983
f. (408) 764-4646

tech.sales@coherent.com www.coherent.com

Coherent follows a policy of continuous product improvement. Specifications are subject to change without notice.
Coherent offers a limited warranty for all EasyMark/ EasyJewel Laser Markers. For full details of this warranty coverage, please refer to the Service section at www.coherent.com or contact your local Sales or Service Representative.
MC-003-18-0M0520Rev.D Copyright ©2020 Coherent, Inc.

